

# CUTTER & BUCK

47.619013°N, 122.359412°W

AUTUMN/WINTER 2022

ISSUE N° 16

Along the  
**EMERALD**  
COAST

Update your  
**WARDROBE**  
GAME

**PREMIUM**  
**PERFORMANCE**  
COMFORTABLE  
& STYLISH

**FROM**  
**SEATTLE**  
**WITH LOVE**

AUTUMN  
ESSENTIALS

Seattle "A Pacific Northwest Love Story"

In the Know. Looks, launches, innovations & the newest styles. THE FORECAST A/W 2022



























































A scenic view of a coastal town with houses on a hillside overlooking a body of water. In the foreground, a metal railing with a vertical post and a horizontal bar is visible. The text "the Outerwear" is overlaid on the image.

# the Outerwear

---











# Baker Jacket & Vest

Men: 351466 Women: 351467

The Baker Jacket and Vest features a highly technical 2-way stretch fabric that allows for unrestricted mobility and comfort. Stuffed with light and lofty padding from Sustans® by Dupont™ and Sorona® which is interlaced into heat-press channels. An exceptionally light piece of outerwear that offers warmth and can be worn alone or as a layer on colder days. Center-front zipper from YKK with auto-lock puller (with chin protector) and garage at chin for next-to-skin comfort. Equipped with zippered front pockets.

**Fabric:** Shell fabric: 87% nylon, 13% elastane, Padding: 100% polyester Sustans by Dupont Sorona, Lining: 87% nylon, 13% elastane | **2299,-**

**Size Men:** S-4XL **Size Women:** XS-XXL



Ivy green  
640



Ivy green  
640



Black  
99

Ivy green  
640

Dark navy  
580

Grey  
90

Khaki  
04

Men: 351468 Women: 351469

**Fabric:** Shell fabric: 87% nylon, 13% elastane, Padding: 100% polyester Sustans by Dupont Sorona, Lining: 87% nylon, 13% elastane | **1499,-**

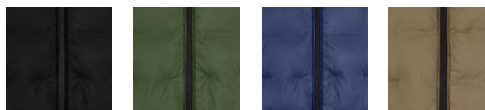
**Size Men:** S-4XL **Size Women:** XS-XXL



Khaki  
04



Khaki  
04



Black  
99

Ivy green  
640

Dark navy  
580

Khaki  
04



# Wenatchee Jacket

Men: 351460 Women: 351461

Cold winters has nothing on the Wenatchee Jacket, it is the ideal long jacket to wear during outdoor activities and on the commute to work. Up to 50% of the fabric is from recycled polyester yarn from discarded plastics. The jacket is remarkably light thanks to its light and lofty insulation made from synthetic and renewable plant raw materials from Sustans by DuPont™ Sorona®. Removable and adjustable hood and two-way YKK zipper.

**Fabric:** Shell fabric: 50% recycled polyester, 50% polyester, Padding: 100% polyester, Lining: 100% polyester | **1899,-**

**Size Men:** S-4XL **Size Women:** XS-XXL

OEKO-TEX®  
CONFIDENCE IN TEXTILES  
STANDARD 100  
SE 14-218 Swerea IVF  
Tested for harmful substances.  
www.oeko-tex.com/standard100



Dark navy  
580



Black  
99



Dark navy  
580



Black  
99











# Pendleton Jacket

Men: 351446 Women: 351447

Contemporary tailoring meets a classic sporty look in this jacket featuring a modern diamond quilt, shoulder detailing and sewn-in side panels. The Sustans® padding from Dupont™ and Sorona® gives the jacket an impressive warmth-to-weight ratio which keeps you warm and comfortable on cold days. Two-way YKK-zip through the center front in black oxide metal finish. Side pockets in soft fleece lining with YKK-zip closures and an additional zipped pocket inside the jacket to carry essentials.



**Fabric:** 100% polyester | **1499,-**  
**Size Men:** S-4XL **Size Women:** XS-XXL



Dark navy  
580

Black  
99

Dark navy  
580

Black  
99

# Glacier Peak Jacket

Men: 351444 Women: 351445

Glacier Peak is named after the major volcanic peak in the Cascade Range, Washington State. This stylish parka keeps warm even when the weather takes a turn for the worse. Primaloft Black Eco® insulation provides a steady warmth as it repels moisture to keep you dry on urban adventures. YKK Metaluxe® zipper and side pockets with soft fleece lining. Rib cuff sleeves and diamond quilt lining. Stow your valuables in the inside zip pocket. Hood can be removed. Equipped with protective chin-guard.

**Fabric:** 90% polyester, 10% nylon | **1999,-**  
**Size Men:** S-4XL **Size Women:** XS-XXL



Black  
99

Black  
99



# Shelton 3-1 Jacket

Men: 351430 Women: 351431

Shelton is the ultimate business jacket for everyday use and ideal for city adventures. Wear both layers alone or, combine them for maximum support. Minimalistic design with a lot of surface to add decoration. Cuffs and front hand pockets with easy-to-open/close press buttons. The inside vest can be zipped out from the jacket and is sewn with vertical quilt lines. YKK® vision zippers at center front jacket and vest.

**Fabric:** Shell Fabric Jacket: 100% polyester, Shell fabric gilet: 100% polyester, Padding: 100% polyester | **1199,-**  
**Size Men:** S-4XL **Size Women:** XS-XXL



Black  
99



Dark navy  
580

# McChord Jacket

Men: 351428 Women: 351429

McChord jacket is a rebirth of the classic flight bomber jacket, initially designed for the Air Force in the Mid-1950. We have kept all the original elements such as durable nylon fabric, warming insulation and metal zippers. Keeping all the standards McChord is taking the bomber jacket to another level with attractive trims and modern mélange inside lining. YKK® metal zipper. Insulation from Sustans® is made out of renewable fibers.

**Fabric:** Shell fabric: 100% polyester, Padding: 100% polyester, Lining: 55% nylon, 45% polyester | **1099,-**  
**Size Men:** S-4XL **Size Women:** XS-XXL



Dark navy  
580

Black  
99



Dark navy  
580

Black  
99















# Cavalero Jacket

Men: 351462

Cavalero is a jacket for all occasions. The car coat is made from technical fabric with waterproof taped seams to protect against light rain and wind and the insulation layer is from Sustans by DuPont™ Sorona®. Its inner liner will keep you warm from early autumn to cold winter mornings. Equipped with a concealed front button placket, removable zip-off front layer, waterproof chest pocket and two hand pockets YKK coil zippers.

**Fabric:** Shell fabric: 100% polyester, Padding: 100% polyester, Lining: 100% nylon | **1999,-**

**Size Men:** S-4XL

OEKO-TEX®  
CONFIDENCE IN TEXTILES  
STANDARD 100  
SE 14-218 Swerea IVF  
Tested for harmful substances.  
www.oeko-tex.com/standard100



Dark navy  
580



Black  
99

# Bellevue Jacket

Men: 351436 Women: 351437

This sleek longer-cut trench coat in minimalistic design is perfect to wear over a workday suit jacket. The lightweight Primaloft® Insulation Black Eco will keep you warm during weekend escapes and morning commutes to work. The outer 3-layer resilient fabric and the fully seam-sealed interior gives you excellent waterproof and breathable properties. WP 3000 / MVP 3000.

**Fabric:** Shell fabric: 67% cotton / 33% nylon, Lining: 100% polyester, Padding: 100% polyester. WP3000/MVP3000 | **1999,-**

**Size Men:** S-4XL **Size Women:** XS-XXL



Charcoal  
98



Dark Navy  
580







# Whittier Jacket

Men: 351456 Women: 351457

From hiking trails to city life, the Whittier Softshell Jacket delivers reliable wet and windy protection wherever you wear it. The fabric is bonded with lamination and thanks to its technology the jacket is waterproof, windproof, and breathable. Cut for a streamline silhouette and equipped with many practical features such as two zipped pockets, removable hood, and easy adjustable velcro cuffs. YKK® Metaluxe® zippers.

**Fabric:** 92% polyester, 8% elastane, WP5000/MVP4000. Lining: 100% polyester | **1099,-**  
**Size Men:** S-4XL **Size Women:** XS-XXL



Anthracite melange  
955



Anthracite melange  
955











# Oak Harbor Jacket

Men: 351452 Women: 351453

Oak Harbor jacket gives you the look of a hoodie with the protection of a jacket. The stretch-polyester sleeves and sides let you move in total comfort. Quilted and warming front and back panel insulated with Sustans® padding in renewable fibres from DuPont™ Sorona®. Ladies' style is equipped with a hood and men's style with a collar. Fully zipped with auto-lock zipper puller at front and pockets. Wear it alone for dry conditions or layer under a rain protective shell for extra warmth.



**Fabric:** Shell fabric 1: 100% polyester. Shell fabric 2: 100% polyester. Padding: 100% polyester | **1199,-**

**Size Men:** S-4XL **Size Women:** XS-XXL



Ivy green  
640

Dark navy  
580

Black  
99

Ivy green  
640

Dark navy  
580

Black  
99

# Silverdale Jacket

Men: 351432 Women: 351433

Silverdale is an ultra-soft and comfortable jacket to wear every day to the office and on business trips. It's easy to pack away in your hand luggage and it adds almost no extra weight. The insulation from Sustans® is made out of renewable fibers from DuPont™ and Sorona®. The jacket is equipped with YKK VISLON® metal zippers and CB branded sliders at center front and pockets.

**Fabric:** Shell fabric: 100% nylon, Padding: 100% polyester, Lining: 100% polyester | **1099,-**

**Size Men:** S-4XL **Size Women:** XS-XXL



Dark navy  
580

Black  
99

Dark navy  
580

Black  
99



# Rainier Jacket & Vest

Men: 351406 Women: 351407

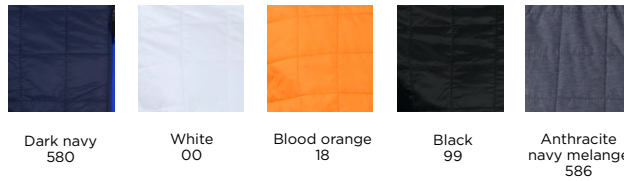
This superlight sporty PrimaLoft® insulation jacket and vest for all season use is surprisingly warm. We use PrimaLoft® insulation inside Rainier Jacket/Vest for its warmth, compressibility and soft comfort. PrimaLoft® ultra-fine fibers were developed to be water resistant so your insulation stays drier and maintains its insulating properties even when wet. Rainier has plenty of pockets, hidden hood inside collar, YKK zippers and can easily be compressed into hand pockets.

**Fabric:** Shell: 100% nylon, Lining: 100 % nylon, Padding: 100 % polyester PrimaLoft | **1799,-**  
**Size Men:** S-4XL **Size Women:** XS-XXL



Blood orange  
18

Blood orange  
18



Dark navy  
580

White  
00

Blood orange  
18

Black  
99

Anthracite  
navy melange  
586

Men: 351408 Women: 351409

**Fabric:** Shell: 100% Nylon, Lining: 100% nylon, Padding: 100 % polyester PrimaLoft | **1399,-**  
**Size Men:** S-4XL **Size Women:** XS-XXL



Anthracite  
navy melange  
586

Black  
99

Anthracite  
navy melange  
586

Black  
99











# Ozette Vest

Men: 351454 Women: 351455

The perfect vest for in between season hikes or underneath a coat as a warming layer. Ozette is insulated with premium PrimaLoft Black Eco® padding in recycled content for warmth and lightness. The fabric is woven from durable recycled nylon yarn. Two zip pockets at front. Vertical quilted lines for a flattering fit. This vest is super lightweight, making it easy for travelling and layering. YKK® zippers.

**Fabric:** Fabric: 100% nylon Recycled. Padding: 100% polyester PrimaLoft® Black Eco | **799,-**  
**Size Men:** S-4XL **Size Women:** XS-XXL



Black 99

Dark navy 580

Black 99

Dark navy 580

# Packwood Jacket

Men: 351426 Women: 351427

A superlight jacket with PrimaLoft® Insulation Black Eco which gives you all necessary features of an outdoor garment; warmth, highly compressibility and great softness. The insulation is made out of 60%-recycled postconsumer materials combined with an advanced fiber technology. Horizontal quilt lines and YKK METALUXE® zipper with metallic look at front brings the jacket a luxury look. Zippered pockets and cuffs.

**Fabric:** Shell fabric: 100% nylon Padding, 100% polyester PrimaLoft, Lining: 100% nylon | **1799,-**  
**Size Men:** S-4XL **Size Women:** XS-XXL



Denim melange 569

Denim melange 569



Denim melange 569



Black 99



Dark navy 580



Olive green melange 630







# Kamloops Jacket

Men: 351448 Women: 351449

A technically advanced light shell jacket with flexible fabric which gives you a great freedom of movement. Kamloops offers long-lasting comfort on the golf course or on the running track. The WeatherTec fabric blocks out wind and light rain without compromising breathability. Lockable YKK-zippers at center front and pockets in contrast colours. A hood is concealed inside the collar. Easy to pack!

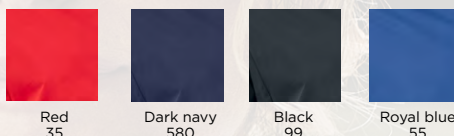
**Fabric:** 80% nylon, 20% elastane | **1199,-**

**Size Men:** S-4XL **Size Women:** XS-XXL



Dark navy  
580

Dark navy  
580



Red  
35

Dark navy  
580

Black  
99

Royal blue  
55

# Navigate Softshell Jacket

Men: 351458 Women: 351459

Find your way to this new, sharp-looking outerwear piece and you won't be disappointed. While the eye-catching melange side panels command attention, the soft stretchy material won't inhibit your movements. CB WeatherTec™ fabrication provides resistance to whatever inclement weather you encounter on your journey to work or on the golf course. Reflective print on the back panels helps keep you safe in low-light conditions. YKK® zippers.

**Fabric:** Shell fabric 1: 100% polyester. Shell fabric 2: 100% polyester. Lining: 100% polyester. CB WeatherTec™ WP5000, YKK® zippers | **1199,-**

**Size Men:** S-4XL **Size Women:** XS-XXL



Dark navy  
580

Dark navy  
580

Black  
99

Black  
99



# Parkdale Jacket

Men: 351412 Women: 351413

Parkdale is a jacket that combines timeless style with an up-to-date design. The full front zipper is hidden behind a snap-close placket which shuts out the cold. Snap-closure hand pockets at front and adjustable cuffs at sleeve. The stylish but yet relaxed look makes a perfect top layer over a suit. YKK silver metal zippers.

**Fabric:** 100% polyester | **1099,-**  
**Size Men:** S-4XL **Size Women:** XS-XXL



Dark navy  
580



Dark navy  
580

# Fairchild Jacket

Men: 351434 Women: 351435

Fairchild is our trendsetting bomber jacket that can be worn inside out showing the sporty blue diamond quilt or with the durable nylon fabric as the outer layer. The YKK VISLON® zipper comes with a reversible slider - easy to open and close. The rib cuffs are made with extra elastane inserts. Front pockets and chest pocket are equipped with zippers that keep your belongings safe

**Fabric:** Shell fabric: 100% nylon, Padding:100% polyester, Lining: 100% polyester | **1299,-**  
**Size Men:** S-4XL **Size Women:** XS-XXL

Fairchild Jacket can be worn reversed, showing the sporty inner blue diamond quilt.



Black  
99



Reversed jacket,  
blue diamond  
quilt.



# Medina Jacket

Men: 351410 Women: 351411

This sleek city styled jacket keeps you warm and comfortable. Equipped with multiple pockets and vent at back with press button closing. The garment has been tailored to fit over a suit. Refined fabric with soft hand feel featured with two button detail at cuff, printed inside lining and YKK metallux zippers for a stylish look.

**Fabric:** Shell: 100% polyester Lining: 100 % polyester, Padding: 100% polyester | **1199,-**

**Size Men:** S-4XL **Size Women:** XS-XXL



Dark navy  
580



Dark navy  
580

# Clearwater Jacket

Men: 351416 Women: 351417

This is an outdoor garment to trust in tough weather conditions. High water-proof performance (8000 mm) and excellent breathability (7000 g/m<sup>2</sup>/24h). The lightweight fabric gives you flexibility and a protective shield from wind and rain. Waterproof zippered hand pockets at front and stow-away hood that fits into the collar. Adjustable cuffs and hem, YKK zippers and fully taped seams.

**Fabric:** Shell fabric: 100% polyester, Lining: 100% polyester. WP 8000mm. MVP7000g/m<sup>2</sup>/24h. | **1399,-**

**Size Men:** S-4XL **Size Women:** XS-XXL



Charcoal  
98

Black  
99



Charcoal  
98

Black  
99



# the Sweaters







# Oakville Crewneck

Men: 355416 Women: 355417

Oakville sweater in crewneck version has a light soft knit structure with a contemporary fit. The mixed yarn composition gives you a comfortable softness from the cotton and durability from the nylon. Fits perfect with a pair of Bridgeport Chinos. Ribbed hem and sleeve. Mashine washable

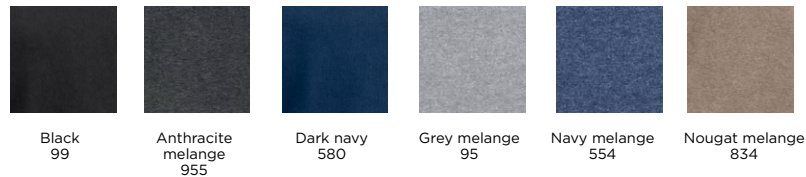
**Fabric:** 80% cotton, 20% nylon **Weight:** 200 g/m<sup>2</sup> | **499,-**  
**Size Men:** S-4XL **Size Women:** XS-XXL



Navy melange  
554



Navy melange  
554



# Oakville V-neck

Men: 355418 Women: 355419

Oakville sweater in crewneck version has a light soft knit structure with a contemporary fit. The mixed yarn composition gives you a comfortable softness from the cotton and durability from the nylon. Fits perfect with a pair of Bridgeport Chinos. Ribbed hem and sleeve. Mashine washable

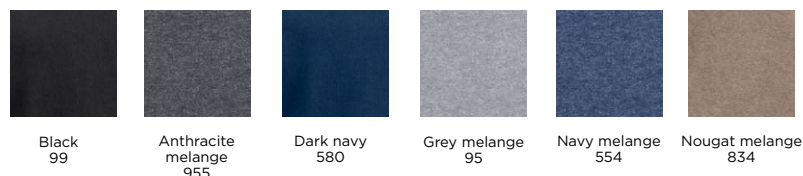
**Fabric:** 80% cotton, 20% nylon **Weight:** 200 g/m<sup>2</sup> | **499,-**  
**Size Men:** S-4XL **Size Women:** XS-XXL



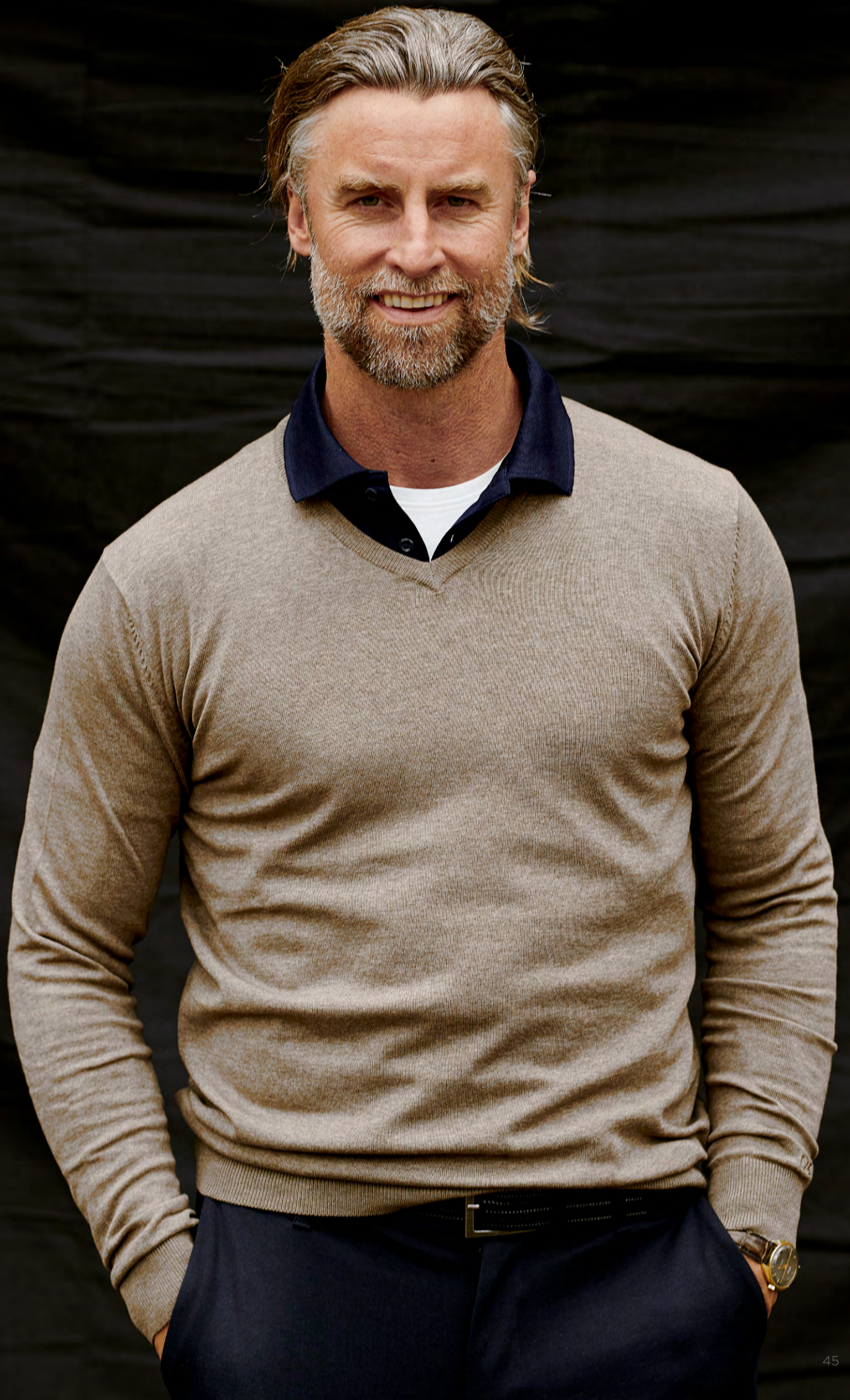
Grey melange  
95



Grey melange  
95













# Kennewick Rollerneck

Men: 355408 Women: 355409

This light knitted sweater with a turtleneck, is the perfect business sweater that never goes out of style. The knit is made out of high quality merino wool yarn which is marketed as "Shiny as silk, Soft as Cashmere".

**Fabric:** 100% cashwool, hand wash **Weight:** 220 g/m<sup>2</sup> | **1199,-**  
**Size Men:** S-4XL **Size Women:** XS-XXL



Grey melange  
95

Black  
99

Grey melange  
95

Black  
99

# Kennewick Crewneck

Men: 355406 Women: 355407

Kennewick Crewneck is our light knitted sweater in a modern fit and with a thinner neckline. The knit is made out of high quality Cashwool® Merino wool yarn which is marketed as "Shiny as Silk, Soft as Cashmere"

**Fabric:** 100% cashwool, hand wash **Weight:** 220 g/m<sup>2</sup> | **1199,-**  
**Size Men:** S-4XL **Size Women:** XS-XXL



Nougat  
melange  
834

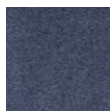
Nougat  
melange  
834



Anthracite  
melange  
955



Nougat  
melange  
834



Sea blue  
melange  
597



Dark navy  
580



Grey melange  
95



Black  
99



# Vernon V-neck

Men: 355432 Women: 355433

Stylish and sleek, this sweater is crafted from a luxury yarn blend of pure merino wool and acrylic. Vernon V-neck provides a timeless look, ideal for a business setting. Perfect for layering all year around, wear it over one of our signature oxford shirts. Modern single layer rib collar and linked seams with full-fashion construction create a classic look.

**Fabric:** 50% Merino Wool, 50% acrylic **Weight:** 12 gauge | **699,-**

**Size Men:** S-4XL **Size Women:** XS-XXL



Anthracite melange  
955

Dark navy  
580

Black  
99



Anthracite melange  
955

Dark navy  
580

Black  
99











# Carnation Sweater

Men: 355426 Women: 355427

Add a distinct fashionable appeal to your wardrobe with this crew neck pullover. Spun from comfortable cotton and durable nylon yarns, so it feels cosy yet lightweight. Its round neck and cuffs are accentuated with single layer finish and it features an all-over structure for an understated exclusive look. The ladies' version is equipped with decorative sleeve rib cuffs that goes halfway up to the elbow. It is perfect for layering, an easy-to-wear look that works every day of the year.

**Fabric:** 80% cotton, 20% nylon **Weight:** 295 g/m<sup>2</sup> | **749,-**  
**Size Men:** S-4XL **Size Women:** XS-XXL



Anthracite melange  
955



Anthracite melange  
955



Grey melange  
95



Black  
99



Navy melange  
554



Taupe melange  
860



Anthracite melange  
955

# Oakville Cardigan

Women: 355425

Cardigan with button opening and rib at bottom hem and sleeve. Made in same soft quality as the other products in the Oakville family. This is the perfect basic item to wear over a shirt or blouse. Placket with buttons. Machine washable.

**Fabric:** 80% cotton, 20% nylon **Weight:** 200 g/m<sup>2</sup> | **499,-**  
**Size Women:** XS-XXL



Dark navy  
580



Black  
99

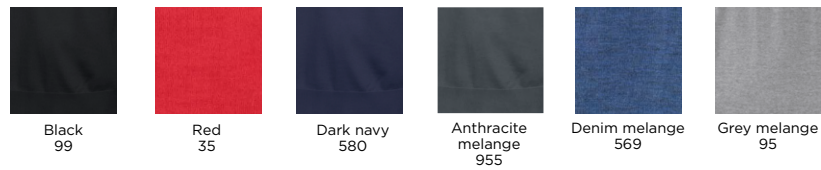


# Everett V-neck

Men: 355430 Women: 355431

Basic, yet exceptional. Everett V-neck is made in the same fine merino wool quality as Everett Half Zip Sweater. English shoulder 1x1 rib collar, hem and cuff. Modern V-neck, C&B logo tone-in-tone at back neck and small metal CB badge. Cold machine wash 30°, spin speed not over 800 rpm.

**Fabric:** 100% cashwool, hand wash **Weight:** 260 g/m<sup>2</sup> | **1199,-**  
**Size Men:** S-3XL **Size Women:** S-XXL



# Everett HZ Sweater

Unisex: 355420

The softest and most durable quality, crafted with the finest merino wool with cashmere feeling. Small metal CB badge, soft and durable quality, discrete zipper at centre front with metal puller. Cold machine wash 30°, spin speed. Not over 800 rpm

**Fabric:** 100% cashwool, hand wash **Weight:** 260 g/m<sup>2</sup> | **1299,-**  
**Size Unisex:** XS-4XL













# Blakely Knitted Sweater

Men: 355402 Women: 355403

Made out of soft cotton yarn, this sweater is designed with inspiration from American rugby and Scandinavian simplicity. A texture of crossing layers creates the cable knit pattern and a soft hand feel. Ribbed sleeves and hem.

**Fabric:** 100 % cotton **Weight:** 315 g/m<sup>2</sup> | **749,-**  
**Size Men:** S-4XL **Size Women:** XS-3XL



Brown melange  
836



Brown melange  
836



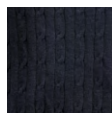
Navy melange  
554



Anthracite  
melange  
955



Red  
35



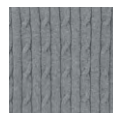
Dark navy  
580



Sand melange  
810



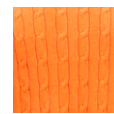
Black  
99



Grey melange  
95



Brown melange  
836



Blood orange  
18

# Blakely Rollerneck

Men: 355422 Women: 355423

Blakely rollerneck is made out of a soft cotton yarn, same cable knit construction as our Full Zip Cardigan and Crewneck carrying the same name. Ribbed bottom hem, sleeves and rollerneck.

**Fabric:** 100% cotton **Weight:** 315 g/m<sup>2</sup> | **799,-**  
**Size Men:** S-4XL **Size Women:** XS-XXL



Navy melange  
554



Navy melange  
554



Black  
99



Grey melange  
95



Sand melange  
810



Navy melange  
554



# Pemberton Hood FZ

Men: 358418 Women: 358419

Pemberton is our iconic hood in double-knit lightweight eco-responsible fabric with up to 70% recycled polyester. The hood collar is high to protect you from cold winds and the hood is easy to adjust with the drawcords. Equipped with two front zipped pockets. Decorated with CUTTER & BUCK logo embroidery along the hood edge.

**Fabric:** 66% recycled polyester, 4% polyester, 26% rayon, 4% elastane (99), 70% recycled polyester, 26% rayon 4% elastane (580, 96), CB DryTec 50 UPF  
**Weight:** 350 g/m<sup>2</sup> | 799,-

**Size Men:** S-4XL **Size Women:** XS-XXL



Black  
99

Dark navy  
580

Pistol  
96



Black  
99

Dark navy  
580

Pistol  
96







# Twisp Hood FZ

Men: 358406 Women: 358407

Classic hood in heavy and rich, peached fabric. Full length YKK metal zipper and kangaroo pocket at front. Lining inside hood and drawstrings in contrast colour. Dark Navy and Burgundy garments are with CUTTER & BUCK embroidery at front. Rib at bottom sleeve and hem.

**Fabric:** 80% cotton, 20% polyester **Weight:** 360g/m<sup>2</sup> | **749,-**  
**Size Men:** S-4XL **Size Women:** XS-XXL



Dark navy  
58057



Dark navy  
58057

With application



Black  
99



Grey melange  
95

Without application



# Thorp Denim Crew

Men: 358410 Women: 358411

Sweater with printed artwork at front. The color denim black, also available without print. Triple needle stitching details and rib at bottom hem and sleeve. Ladies' is folded and with vent at bottom hem.

**Fabric:** 100% cotton **Weight:** 280 g/m<sup>2</sup> | **689,-**  
**Size Men:** S-4XL **Size Women:** XS-XXL



Denim Black 92195



Denim Black 921

# Thorp Denim Hood FZ

Men: 358408 Women: 358409

Comfortable indigo dyed hoody, featured with a YKK full length coil zipper. Pockets at front and single jersey lining inside the hood. Rib at bottom hem and sleeve and triple needle stitching details.

**Fabric:** 100% cotton **Weight:** 280 g/m<sup>2</sup> | **749,-**  
**Size Men:** S-4XL **Size Women:** XS-XXL



Denim blue  
581



Denim blue  
581



# Tofino Pants

Men: 356412 Women: 356413

Tofino are the go-to pants for all occasions, a key casual item in your wardrobe for years to come. Made from a tri-blend mix, they are durable, surprisingly soft, and stretchy to complement the slim fit. The chinos are traditionally finished with welt back pockets, front hand pockets and one extra hidden zip pocket on the side.

**Fabric:** 64% viscose, 31% polyester, 5% elastane **Weight:** 370 g/m<sup>2</sup> | **699,-**  
**Size Men:** 30/32-40/34 **Size Women:** XS-XXL



## Winlock Belt

Unisex: 359401

Elastic braided stretch belt in fishbone pattern with leather trims.  
CB embossed logo.

**Fabric:** Belt: 52% polypropylene, 48 % Rubber Elastic, Trim: 100% Genuine Leather | **229,-**  
**Size:** Length: 110 (excluding buckle), Width: 3,5 cm.



Dark navy  
580

## Colville Belt

Unisex: 359402

Stretch braided leather belt. Easy to adjust to fit around the waist.  
Classic metal buckle closing at front, with CB logo.

**Fabric:** Leather and PU | **359,-**  
**Size:** Length: 110 (excluding buckle)



Black  
99







# New Salish Pants & Salish Shorts

These pants and shorts are loaded with technical features. Durable stretchy fabric with quick dry function - CB DryTec™ - that reduces water absorption and increases drying time for you to feel comfortable at all times. Designed for ease of movement and an active lifestyle. Button adjustment and silicone gripper at waist.

**Men:** 356410

**Fabric:** 88% polyester, 12% elastane **Weight:** 172 g/m<sup>2</sup> | **999,-**

**Size Men:** S-4XL

**Men:** 356414

**Fabric:** 88% polyester, 12% elastane **Weight:** 172 g/m<sup>2</sup> | **729,-**

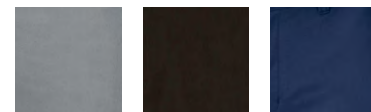
**Size Men:** S-4XL



Grey  
90



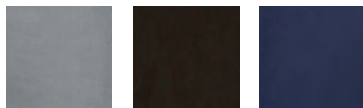
Dark navy  
580



Grey  
90

Black  
99

Dark navy  
580



Grey  
90

Black  
99

Dark navy  
580

## Mansford 3-pack Belt

**Unisex:** 359403

Easy to use, just remove the buckle and change between the three color options. The removable buckle enables you to customize the size of the belt.

**Fabric:** Webbing: 100% polypropylene, Buckle: iron | **299,-**

**Size Unisex:** One size



Dark navy  
580



Black  
99



White  
00



# Salish Pants & Shorts Ladies

These pants and shorts are loaded with technical features. Durable stretchy fabric with quick dry function - CB DryTec™ - that reduces water absorption and increases drying time for you to feel comfortable at all times. Designed for ease of movement and an active lifestyle. Button adjustment and silicone gripper at waist.

**Women:** 356401

**Fabric:** 88% polyester,12% elastane **Weight:** 172 g/m<sup>2</sup> | **999,-**

**Size Women:** XS-XXL

**Women:** 356403

**Fabric:** 88% polyester,12% elastane **Weight:** 172 g/m<sup>2</sup> | **729,-**

**Size Women:** XS-XXL



# Suncadia Skort

**Women:** 359423

Skort with flattering lines, moisture-wicking performance fabric and great stretch capabilities gives you a comfortable fit. 50+ UPF keeps you worry-free on sunny days. Pull-on elastic waistband, hidden zip pockets and our CB-signature-logo embroidery on the front to the side.

**Fabric:** Shell fabric: 86% Polyester / 14% Spandex. Inner shorts: 91% Polyester / 9% Spandex **Weight:** 225 g/m<sup>2</sup> | **749,-**

**Size Women:** XS-XXL





# Bonney Lake Pants

Women: 356417

From the golf course to the office, the Bonney Lake Pants will give you that extra edge. Offering moisture-wicking CB DryTec twill with UPF 50+ and 4-way stretch made to move with you, stay cool, dry, agile and protected from the sun in this pants. The comfortable pull-on waistband has a flattering fit and the invisible front zip pockets give you a sleek look while stowing your essentials.

---

**Fabric:** 86% polyester, 14% elastane **Weight:** 225 g/m<sup>2</sup> | **999,-**

**Size Women:** XS-XXL



Black  
99







A photograph of a light blue tufted sofa against a wood-paneled wall with a white ceiling. The sofa is in the foreground, showing its tufted backrest and a portion of its armrest. The wall behind it is made of vertical wooden planks, and the ceiling above is white with a textured surface. The text "the Shirts" is centered over the wood paneling.

# the Shirts

---











# Advantage Shirt

Men: 352410 Women: 352411

The iconic Advantage Pique Dress Shirt combines a tri-blend stretch pique with casual dress shirt styling for exceptional versatility, designed to be your favorite for work, travel or a dinner out. We created this hybrid style to give you the highest level of comfort while looking sharp all day long.

**Fabric:** 52% cotton, 45% polyester, 3% elastane **Weight:** 190 g/m<sup>2</sup> | **799,-**

**Size Men:** S-4XL **Size Women:** XS-XXL



Black  
99

Dark navy  
580

Ivy green  
640



Black  
99

Dark navy  
580

Ivy green  
640







# Belfair Oxford Shirt

Men: 352400 Women: 352401

Belfair is a re-invented oxford shirt combining traditional button down collar with stylish details. High quality cotton yarn and super soft hand feel. Men's shirt double needle side seam, ladies' shirt five needle side seam for shaped waist line. This essential wardrobe piece conveys ease, comfort and a preppy look.

**Fabric:** 100% cotton **Weight:** 145 g/m<sup>2</sup> | **799,-**  
**Size Men:** S-4XL **Size Women:** XS-XXL



French blue/White stripe  
50500



French blue/White stripe  
50500



Black  
99

Burgundy/  
White stripe  
3800

Dark navy  
580

French blue  
505

Grey  
921

French blue/  
White stripe  
50500

White  
00

Red  
35

# Ellensburg Denim Shirt

Men: 352404 Women: 352405

Denim shirt in soft and durable indigo dyed fabric. Tailored fit with a current shaped collar, this piece of garment defines the modern dress code. With its Western roots Ellensburg features original denim shirt details and contemporary design. Men's shirt with chest pocket on left side.

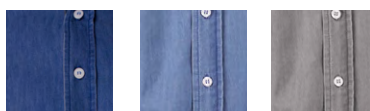
**Fabric:** 100% cotton **Weight:** 160 g/m<sup>2</sup> | **699,-**  
**Size Men:** S-4XL **Size Women:** XS-XXL



Denim blue  
581



Denim blue  
581



Dark indigo  
558

Denim blue  
581

Denim grey  
920



# Hansville Shirt

Men: 352406 Women: 352407

This is a reinterpretation of a classic oxford shirt yet now with added stretch for a streamlined fit. The fabric is pre-washed for a luxurious soft finish. Featuring button-down collar, chest pocket and curved hem. A number one wardrobe classic.

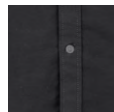
**Fabric:** 97% cotton, 3% elastane **Weight:** 170 g/m<sup>2</sup> | **849,-**  
**Size Men:** S-4XL **Size Women:** XS-XXL



French blue  
505



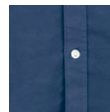
French blue  
505



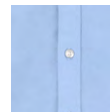
Black  
99



White  
00



Blue Oxford  
530



French blue  
505

# Summerland Linen Shirt

Men: 352408 Women: 352409

A premium shirt made from pure linen in a light and airy fabric. This regular modern fit shirt with shaped waist features contrast seam details. Men's style comes with a chest pocket (except for the white shirt which has no chest pocket). Width-adjustable two-button cuffs are decorated with CB-signature-logo on the top sleeve vent.

**Fabric:** 100% linen **Weight:** 135 g/m<sup>2</sup> | **999,-**  
**Size Men:** S-4XL **Size Women:** XS-XXL



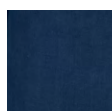
Dream blue  
512



Dream blue  
512



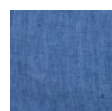
Denim melange  
569



Dark navy  
580

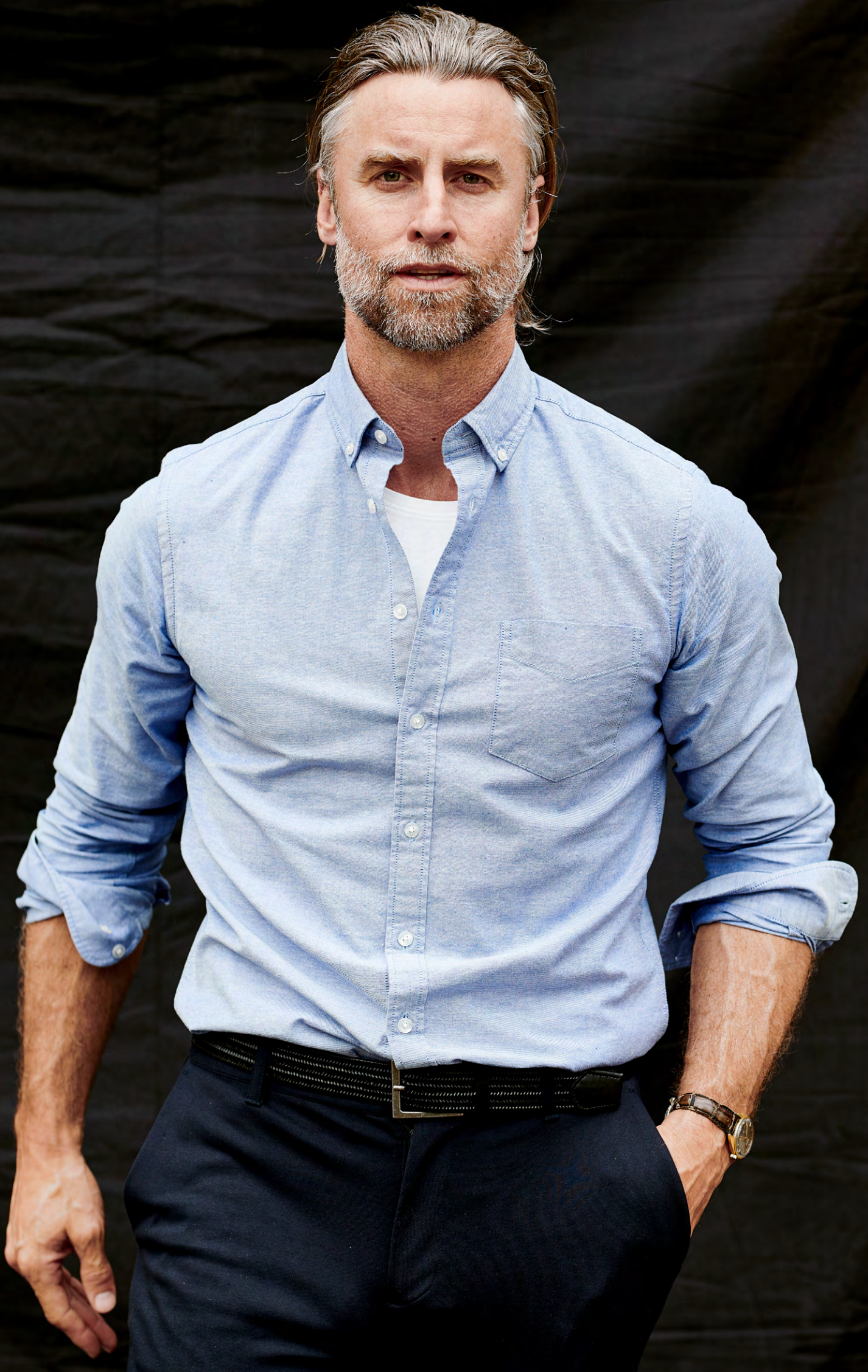


White  
00



Dream blue  
512







A blurred background image of a golf course with a city skyline in the distance. The foreground is a green golf course with a sand trap in the middle ground. The background shows a dense line of trees and a city skyline with several tall buildings under a cloudy sky.

# the Polos

---





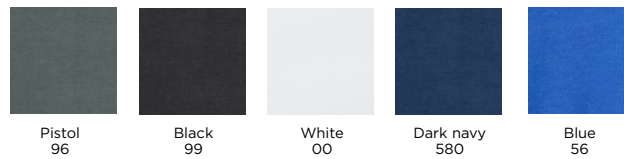


# Advantage Premium Polo

Men: 354420 Women: 354421

Our updated 2.0 version of Advantage Polo. The self-fabric collar and woven fabric contrasts inside makes it even more stylish. Metal buttons at front placket and small metal CB badge at front bottom. CB DryTec Cotton+ 35 UPF fabrication and the unique tri-blend quality provides maximum versatility for an active lifestyle

**Fabric:** 52% cotton, 45% polyester, 3% elastane **Weight:** 190 g/m<sup>2</sup> (white 225 g/m<sup>2</sup>) | **499,-**  
**Size Men:** S-4XL **Size Women:** XS-XXL

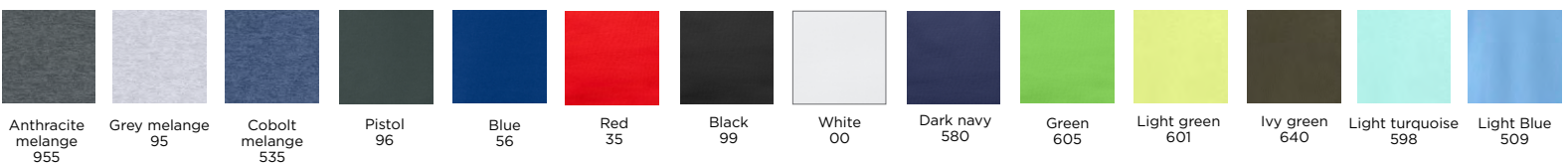


# Advantage Polo

Men: 354418 Women: 354419

CB DryTec Cotton+ 35 UPF fabrication deliver a soft hand with a touch of stretch and moisture-wicking polo that make this an instant wardrobe staple. Our unique tri-blend of cotton, polyester and elastane provides maximum versatility for your active lifestyle.

**Fabric:** 52% cotton, 45% polyester, 3% elastane **Weight:** 190 g/m<sup>2</sup> (white 225 g/m<sup>2</sup>) | **499,-**  
**Size Men:** S-4XL **Size Women:** XS-XXL













# Advantage Sleeveless

Women: 353407

Made in our famous CB DryTec +35 UPF tri-blend fabric which is soft and stretchy with moisture wicking capability. This sleeveless ladies' polo is with a shaped front neck line and a longer placket for a great feminine look. Short stand-up collar and active sporty fit. Signature logo at back neck.

**Fabric:** 52% cotton, 45% polyester, 3% elastane **Weight:** 190 g/m<sup>2</sup> (white 225 g/m<sup>2</sup>) | **459,-**

**Size Women:** XS-XXL



Black  
99

White  
00

Red  
35

Dark navy  
580

# Advantage Dress

Women: 359425

Made in our famous CB DryTec Cotton 35+ UPF fabric. Our unique tri-blend of cotton, polyester and elastane is soft, stretchy and provides maximum versatility for your active lifestyle. Rounded seam at the shoulder for better shape with a modern fit from top and to bottom.

**Fabric:** Tri-blend, 52% cotton, 45% polyester, 3% elastane **Weight:** 190 g/m<sup>2</sup> | **599,-**

**Size Women:** XS-XXL



Dark navy  
580

Black  
99







# Advantage Performance Polo

Men: 354422 Women: 354423

Made in our bestselling CB DryTec +35 UPF tri-blend fabric with a lot of stretch and excessive wicking effect. This is our sporty Advantage version with press buttons that are easy to open and close and a modern shaped collar in self-fabric. Forward shoulder seam for added movement. Signature logo at back neck.

**Fabric:** 52% cotton, 45% polyester, 3% elastane **Weight:** 190 g/m<sup>2</sup> (white 225 g/m<sup>2</sup>) | **499,-**  
**Size Men:** S-4XL **Size Women:** XS-XXL



# Advantage Stand-Up Collar Polo

Men: 353406

Made in our famous CB DryTec +35 UPF tri-blend fabric. Stretchy with moisture wicking capability. Raglan armhole seam for great movement ability and fashionable stand-up collar in rib and 3-button placket. A contemporary garment with sporty fit that works just as well on the golf course as in the city. Signature logo at back neck.

**Fabric:** 52% cotton, 45% polyester, 3% elastane **Weight:** 190 g/m<sup>2</sup> (white 225 g/m<sup>2</sup>) | **499,-**  
**Size Men:** S-4XL





ADMIT ONE

7

TER  
INGTON









# Oceanside Stretch Polo

Men: 354430 Women: 354431

An essential piece for every wardrobe - you can never go wrong with a stylish and practical polo. Oceanside Stretch Polo is made in a unique bi-blend cotton fabric with added elastane for stretch, softness and great fit. It features all the classic details but with extra touch of exclusivity such as embroidered logo at back neck, tone-in-tone buttons and soft jersey inside the collar.

**Fabric:** 95% cotton, 5% elastane **Weight:** 190 g/m<sup>2</sup> | **499,-**

**Size Men:** S-4XL **Size Women:** XS-XXL

















# Seabeck Polo

Men: 354428 Women: 354429

Seabeck, our performance polo with yoke in contrasting colour block and decorative piping. Fabric with built-in UV-protection, designed for an active lifestyle. This comfortable and short sleeve polo feels super soft against the skin and efficiently wicks the perspiration away. Placket with hidden buttons.

**Fabric:** 100% polyester **Weight:** 150 g/m<sup>2</sup> | **399,-**  
**Size Men:** S-4XL **Size Women:** XS-XXL



Black/Light grey  
9993



Black/Light grey  
9993



Pink/White  
21000



Dark navy/White  
58000



Black/Red  
9935



Black/White  
9900



Dark navy/Red  
58035



Black/Light grey  
9993



Dark navy/Royal  
58055

# Kelowna Polo

Men: 354400 Women: 354401

A classic polo with UV protection, specifically designed to wear next to the skin, effortlessly moving with you thanks to its sporty cut. Kelowna Polo feels super soft against the skin and efficiently wicks the perspiration away from your body. Designed with ribbed collar, 3 buttons and our signature printed logo at back neck.

**Fabric:** 100 % polyester with UV-protection **Weight:** 155 g/m<sup>2</sup> | **349,-**  
**Size Men:** S-4XL **Size Women:** XS-XXL



Neon cerise  
260



Neon cerise  
260



Red  
35



White  
00



Green  
677



Neon yellow  
101



Light grey  
93



Royal blue  
55



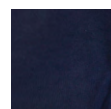
Peach  
340



Light pink  
210



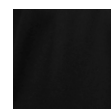
Neon cerise  
260



Dark navy  
580



Light blue  
509



Black  
99







# Pacific City Tee

Men: 353400 Women: 353401

Keep it simple and relaxed in this cool t-shirt. Modern fit with a little wider neck opening, made in single jersey quality. Prewashed for extra softness. Choose your t-shirt with print at front, or without for those who wish to add their own logo.

**Fabric:** 80% cotton, 20% polyester **Weight:** 150 g/m<sup>2</sup> | **199,-**  
**Size Men:** S-4XL **Size Women:** XS-XXL



White  
0095

Denim melange  
569

Black  
9995



White  
0095

Denim melange  
569

Black  
9995

With application



White  
00

Anthracite  
melange  
955

Black  
99



White  
00

Anthracite  
melange  
955

Black  
99

Without application



# Manzanita T-shirt

Men: 353404 Women: 353405

Stretchy soft classic v-neck t-shirt for everyday use. Modern fit and decorated with a small metal tab label at the front bottom.

**Fabric:** 95% cotton, 5% elastane **Weight:** 160 g/m<sup>2</sup> | **229,-**  
**Size Men:** S-4XL **Size Women:** XS-XXL



V-neck  
Black 99



V-neck  
White 00

# Manzanita Roundneck

Men: 353408 Women: 353409

**Fabric:** 95% cotton, 5% elastane **Weight:** 160 g/m<sup>2</sup> | **229,-**  
**Size Men:** S-4XL **Size Women:** XS-XXL



Roundneck  
Black 99



Roundneck  
Dark navy 580



Roundneck  
Grey 90



Roundneck  
White 00





# the Midlayers

---











# Snoqualmie Vest & Jacket

Men: 351464 Women: 351465

Our iconic Snoqualmie fleece vest and jacket keeps you comfortable and warm on crisp days around town and on the golf course. Equipped with lockable YKK-zippers at center front and pockets in contrast colours. This quick-drying fleece fabric with extra stretch abilities is the perfect layer for outdoor adventures.

**Fabric:** 92% polyester, 8% elastane **Weight:** 270 g/m<sup>2</sup> | **599,-**

**Size Men:** S-4XL **Size Women:** XS-XXL



Black  
99

Charcoal  
98

Dark navy  
580



Black  
99

Charcoal  
98

Dark navy  
580

Men: 351450 Women: 351451

**Fabric:** 92% polyester, 8% elastane **Weight:** 270 g/m<sup>2</sup> | **799,-**

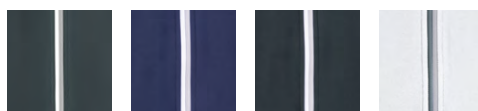
**Size Men:** S-4XL **Size Women:** XS-XXL



White  
00



White  
00



Charcoal  
98

Dark navy  
580

Black  
99

White  
00



# Stealth Jacket

Men: 351442 Women: 351443

This jacket represents the future of sweatshirt-meets-outerwear and is the perfect crossing from sportswear to casual fashion. Breathable and moisture-wicking. Sleeves and back in a lightweight soft fabric incorporated into a woven vest that protects you from light rains. Zip pockets at front.

**Fabric:** Front: 100% polyester, back and sleeves 89% polyester, 11% spandex. CB DryTec

**Weight:** Fabric 1: 200 g/m<sup>2</sup>, Fabric 2:200 g/m<sup>2</sup> Filling: 40 g/m<sup>2</sup> | 999,-

**Size Men:** S-4XL **Size Women:** XS-XXL



White  
00

Dark navy  
580

Black  
99

# Coos Bay Half Zip

Men: 358400 Women: 358401

A classic long sleeve top with ultra-soft stretchy fabric. Brushed inside to keep the wearer warm. Ideal to use as a base layer under a jacket or as a second layer. The fabric's wicking effect leads the moisture away from your body. Flatlock seams, UV protection, YKK-zipper at front and our signature printed logo at neck.

**Fabric:** 100 % polyester **Weight:** 195 g/m<sup>2</sup> | 499,-

**Size Men:** S-4XL **Size Women:** XS-XXL



Red  
35

Red  
35



Dark navy  
580



Red  
35



White  
00



Black  
99



Royal blue  
55









Cutter & Buck  
Since 1990



CUTTER & BUCK





# Traverse HZ

Men: 358416 Women: 358417

Stripes add a stylish flair, but it's the CB DryTec 50+UPF fabric (with its moisture-wicking, sun-protective qualities) that makes this half zip truly special. The fabric is soft, stretchy and breathable. Other design features include a mock neck (with YKK-zip) for temperature regulation, flatlock seams and reflective CB trim for low light visibility. Traverse is the perfect mid-layer piece to wear out on a sporty adventure or why not match it with a pair of chinos for a casual look.

**Fabric:** 90% polyester, 10% spandex **Weight:** 200 g/m<sup>2</sup> | **849,-**  
**Size Men:** S-4XL **Size Women:** XS-XXL



# Chambers Half Zip

Men: 358412 Women: 358413

A long sleeve sweater in an extremely soft polyester material that wicks away the moisture from the body. YKK® zipper at front and a protective placket layer underneath to protect your skin. Wear it under a shell jacket or as a top layer on warmer days. UV-protection. Small zip chest pocket for keys and cards.

**Fabric:** 100% polyester **Weight:** Fabric: 220 g/m<sup>2</sup> | **579,-**  
**Size Men:** S-4XL **Size Women:** XS-XXL



Denim melange 569



Grey melange 95



Anthracite melange 955



# La Push Half Zip SS Jacket

Men: 351420 Women: 351421

This lightweight jacket with short sleeves ensures freedom of movement and protects from wind and light rain. Designed with sewn in pockets at front seams. UV protection, YKK half-length zipper at front. Tone-in-tone logo at back. A perfect jacket to wear over a long sleeve base layer.

**Fabric:** 100% polyester and CB Wind TecTM **Weight:** 70 g/m<sup>2</sup> | **599,-**  
**Size Men:** S-4XL **Size Women:** XS-XXL



Black  
99



Black  
99

# La Push Rain Jacket

Men: 351418 Women: 351419

A smooth lightweight jacket with UV protection, added coating and taped seams. Waterproof 3000 mm, breathable 3000 g/m<sup>2</sup>/24h. Logo at center back. Silver logo at black jacket, white logo at dark navy jacket, black logo at neon yellow jacket. YKK zip pullers and zipped hand pockets at front hidden in the seam.

**Fabric:** 100% polyester and CB Weather TecTM **Weight:** 90 g/m<sup>2</sup> | **999,-**  
**Size Men:** S-4XL **Size Women:** XS-XXL



Neon yellow  
101

Black  
99



Neon yellow  
101

Black  
99



# North Shore Jacket & Pants

Men: 351438 Women: 351439

Rainwear constructed in 4-way stretch shell fabric and 3-layer material, these jacket and pants are loaded with technical features made for the all-weather player in mind. Maximum protection against rain and wind and full freedom of movement. Excellent breathability and excess heat on the inside and transports perspiration. YKK water repellent zippers and adjustable bottom edges. WP 10 000 mm and MVP 10 000 g/m<sup>2</sup>/24h. Adjustable cuffs. CB branding appears on the left sleeve, chest and at the back neck on the jacket. Front and rear pockets on pants and front and zipper at center front on jacket.

**Fabric:** Shell fabric: 100% polyester, Lining: 100% polyester. VentAir. WP10 000/MVP10 000 | 1999,-

**Size Men:** S-4XL **Size Women:** XS-XXL



Dark navy  
580

Black  
99

Dark navy  
580

Black  
99

Men: 356438 Women: 356439

**Fabric:** Shell fabric: 100% polyester, Lining: 100% polyester. VentAir. WP10 000/MVP10 000 | 1499,-

**Size Men:** S-4XL **Size Women:** XS-XXL



Dark navy  
580

Black  
99

Dark navy  
580

Black  
99











# CB Accessories

## Gamble Sands Cap

Unisex: 359411

Ultra-light and highly breathable OneTouch® fabric for maximal stretch and comfort. Seamless construction fits all head shapes. A-flex stretch band inside the cap and velcro closing at back for easy adjustment. Gamble Sands Cap comes with and without CB logo at front, perfect if you want to use the full area to add your own logo. CB logo at front.

2 sizes

Fabric: 100% polyester Weight: 230 g/m<sup>2</sup> | 449,-  
Size Unisex: 56-58

With logo



Without logo



## Pronghorn Cap

Unisex: 359412

Cap in technical structured fabric but maintained classic look. 5-panel construction for a great shape and added ventilation holes for perspiration. Signature embroidery at front and metal closing at back for easy size adjustment.

Fabric: 96% polyester, 4% spandex Weight: 105 g/m<sup>2</sup> | 319,-  
Size Unisex: 56-58

2 sizes



## CB Cap

Unisex: 359410

Cap in woven melange polyester fabric. Embroidered Cutter & Buck logo at front.

Fabric: 100% polyester Weight: 180 g/m<sup>2</sup> | 149,-  
Size Unisex: 56, 58

Color 95 also in size 56



## Blyn Hat

Unisex: 359417

A classic cuff beanie made with warm wool yarn and resilient acrylic yarn blend that will keep you warm season after season.

Fabric: 70% acrylic, 30% wool | 199,-



## Umbrella

Unisex: 351073

Lightweight umbrella for a stylish appearance on rainy days on the course or in the city.

Fabric: carbone, polyester | 299,-

Black 1999





# CB Junior

## Kelowna Polo Junior

Junior: 354414

A classic polo with UV protection, specifically designed to wear next to the skin, effortlessly moving with you thanks to its sporty cut. Kelowna Polo feels super soft against the skin and efficiently wicks the perspiration away from your body. Designed with ribbed collar, 3 buttons and our signature printed logo at back neck.

**Fabric:** 100% polyester **Weight:** 155 g/m<sup>2</sup> | **269,-**

**Size Junior:** 122/128-158/164



Royal blue  
55

Red  
35

White  
00

Dark navy  
580

Black  
99

## Gamble Sands Cap Junior

Junior: 359413

Ultra-light and highly breathable OneTouch® fabric for maximal stretch and comfort. Seamless construction fits all head shapes. A-flex stretch band inside the cap and velcro closing at back for easy adjustment. CB logo at front.

**Fabric:** 100% polyester **Weight:** 230 g/m<sup>2</sup> | **439,-**

**Size Junior:** One size



Black  
9999

Dark navy  
580580

Red  
3535

## La Push Rain Jacket Junior

Junior: 351422

A smooth lightweight jacket with UV protection, added coating and taped seams. Waterproof 3000 mm, breathable 3000 g/m<sup>2</sup>/24h. Silver logo at center back. YKK zip pullers and zipped hand pockets at front hidden in the seam.

**Fabric:** 100% polyester | **899,-**

**Size Junior:** 122/128-158/164



Black  
99

## Chambers HZ Junior

Junior: 358414

A long sleeve sweater with extremely soft polyester material that wicks away the moisture from the body. YKK® zipper at front and a protective placket layer underneath to protect the skin. Wear it under a shell jacket or as a top layer on warmer days. UV-protection. Small zip chest pocket.

**Fabric:** 100% polyester | **529,-**

**Size Junior:** 122/128-158/164



Anthracite melange  
955



# Index

## Jackets & Rainwear

Modell	Garment	Page	
351466/351467	Baker Jacket	19	<b>New Color</b>
351468/351469	Baker Vest	19	<b>New Color</b>
351436/351437	Bellevue Jacket	28	
351462	Cavalero Jacket	28	
351416/351417	Clearwater Jacket	41	<b>Discontinued</b>
351434/351435	Fairchild Jacket	40	<b>Discontinued</b>
351444/351445	Glacier Peak Jacket	23	
351448/351449	Kamloops Jacket	39	
351420/351421	La Push Half Zip Jacket	100	<b>Discontinued</b>
351418/351419	La Push Rain Jacket	100	
351422	La Push Rain Jacket Junior	105	
351428/351429	McChord Jacket	24	
351410/351411	Medina Jacket	41	<b>Discontinued</b>
351458/351459	Navigate Softshell Jacket	39	
351438/351439	North Shore Jacket	101	
356438/356439	North Shore Pants	101	
351452/351453	Oak Harbor Jacket	33	<b>New Color</b>
351454/351455	Ozette Vest	37	
351426/351427	Packwood Jacket	37	
351412/351413	Parkdale Jacket	40	<b>Discontinued</b>
351446/351447	Pendleton Jacket	23	
351406/351407	Rainier Jacket	34	
351408/351409	Rainier Vest	34	
351430/351431	Shelton 3-i-1 Jacket	24	
351432/351433	Silverdale Jacket	33	
351460/351461	Wenatchee Jacket	20	
351456/351457	Whittier Jacket	30	

## Hoodies & Sweaters

Modell	Garment	Page	
355402/355403	Blakely Knitted Sweater	55	
355422/355423	Blakely Rollerneck	55	
355426/355427	Carnation Sweater	51	
355420	Everett Half Zip	52	
355430/355431	Everett V-neck	52	
355406/355407	Kennewick Crewneck	47	
355408/355409	Kennewick Rollerneck	47	
355425	Oakville Cardigan	51	
355416/355417	Oakville Crewneck	44	
355418/355419	Oakville V-neck	44	
358418/358419	Pemberton Hood	56	<b>New AW22</b>
358410/358411	Thorp Denim Crew	59	
358408/358409	Thorp Denim Hood	59	<b>Discontinued</b>
358406/358407	Twisp Hood Full Zip	58	
355432/355433	Vernon V-neck	48	

## Shirts

Modell	Garment	Page	
352410/352411	Advantage Shirt	69	
352400/352401	Belfair Oxford Shirt	71	
352404/352405	Ellensburg Denim Shirt	71	
352406/352407	Hansville Shirt	72	<b>New Color</b>
352408/ 352409	Summerland Linen Shirt	72	

## Pants, Shorts, Dresses & Skorts

Modell	Garment	Page	
359425	Advantage Dress	79	
356417	Bonney Lake Pants	64	
356410	New Salish Pants	62	
356401	Salish Pants Ladies	63	
356414	Salish Shorts Men	62	
356403	Salish Shorts Ladies	63	
359423	Suncadia Skort	63	
356412/356413	Tofino Pants	60	<b>New AW22</b>

## Polo Piqué

Modell	Garment	Page	
354422/354423	Advantage Performance	81	
354418/354419	Advantage Polo	76	
354420/354421	Advantage Premium	76	
353407	Advantage Sleeveless Ladies	79	
353406	Advantage Stand-Up Collar	81	
354400/354401	Kelowna Polo	88	
354414	Kelowna Polo Junior	105	
354430/354431	Oceanside Stretch Polo	84	
354428/354429	Seabeck Polo	88	

## T-shirts

Modell	Garment	Page	
353408/353409	Manzanita t-shirt Roundneck	91	
353404/353405	Manzanita t-shirt V-neck	91	
353400/353401	Pacific City Tee	90	

## Long sleeve sweaters

Modell	Garment	Page	
358412/358413	Chambers Half Zip	99	
358414	Chambers Half Zip Junior	105	
358400/358401	Coos Bay Half Zip	96	
351450/351451	Snoqualmie Jacket	95	
351464/351465	Snoqualmie Vest	95	
351442/351443	Stealth Jacket	96	
358416/358417	Traverse Half Zip	99	

## Accessories

Modell	Garment	Page	
359417	Blyn Hat	104	<b>New AW22</b>
359410	CB Cap	104	
359402	Colville Belt	60	
359411	Gamble Sands Cap	104	
359413	Gamble Sands Cap Junior	105	
359403	Mansford 3-pack Belt	62	
359412	Pronghorn Cap	104	
351073	Umbrella	104	
359401	Winlock Belt	60	

We reserve for any misprints. Color deviations can occur due to technical photo or print reasons. All prices are in NOK and excluding VAT.



# Sizes & Fabrics

## Size Guide Men's

	S	M	L	XL	XXL	3XL	4XL
Chest	88-92	96-100	104-108	112-116	120-124	128-132	136-140
Waist	76-80	84-88	92-96	100-104	108-112	116-120	124-128
Hip	92-96	100-104	108-112	116-120	124-128	132-136	140-144
Inseam length	80	82	84	86	88	90	92

## Men' Pants, inch

	30"	31"	32"	33"	34"	36"	38"	40"
Waist	80	83	86	89	92	98	104	110

## Men' Pants, Inseam, inch

32" 82 cm

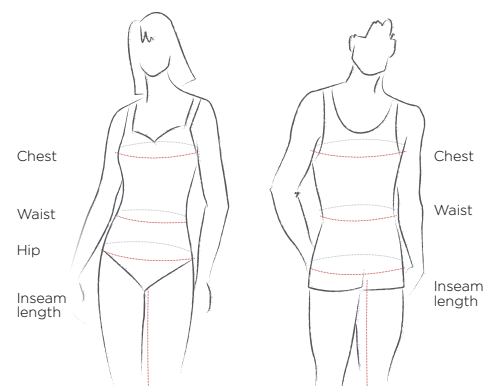
34" 86 cm

## Size Guide Ladies

	XS	S	M	L	XL	XXL
Chest	76-80	84-88	92-96	100-104	110-116	122-128
Waist	60-64	68-72	76-80	84-88	94-100	106-112
Hip	84-88	92-96	100-104	108-112	117-122	127-132
Inseam length	79	79	79	80	80	80

## Size Guide Junior

	122/128	134/140	146/152	158/164
Chest	61-64	67-70	73-76	79-82
Waist	56-59	62-65	63-66	68-71
Hip	65-68	78-81	77-80	83-86



## How to measure

**Chest:** Measure broadest part of chest up under the arms. **Waist:** Measure around your natural waistline. Keep tape measure a little loose. **Hip:** Measure hip at broadest part while keeping heels together. **Inseam length:** Measure from crotch to bottom of leg.

# Functional fabrics

You can't control the weather, but our advanced performance wear is proof you can challenge it. The Cutter & Buck collection offers a broad range of lightweight, breathable, quick-drying clothes designed with stretch for maximum freedom of movement.

## CB WEATHERTEC™

- » Water proof
- » Wind proof
- » Breathable

## CB WINDTEC™

- » Wind-resistant
- » Lightweight
- » Breathable
- » Comfortable

Sudden downpour? Canyon winds? Bring 'em on! The Cutter & Buck CB WeatherTec™ collection protects you from whatever mother nature throws down, with the best technical fabrics - field-tested and thoroughly researched.

## CB DRYTEC™

- » Moisture wicking
- » Comfortable
- » Breathable
- » Allows fabric to breathe naturally

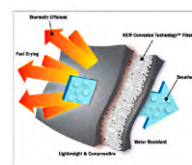
Stay cool and dry with the Cutter & Buck CB DryTec™ collection. Utilizing an array of unbeatable moisture management technologies, these garments are designed to conquer heat and humidity.



## PRIMALOFT®

### PrimaLoft® Silver Insulation and PrimaLoft® Black Insulation Eco

are world-leading synthetic insulation materials. They outperform other competitive synthetic insulations, trapping the heat better in both wet and dry conditions. All PrimaLoft fibers are specially treated with a proprietary finish that prevents them from absorbing moisture and keeps the fibers very dry in wet conditions, which is key to help the body retain a comfortable temperature, staying warm and conserve energy. PrimaLoft® Black Insulation Eco is made out of 60%-recycled post-consumer materials.



## VENTAIR®

Vent Air represents the latest in cutting edge fabric technologies. It offers wind and water proofing in combination with excellent ventilation and moisture transport. Vent Air Wind provides protection in chilly conditions with low bulk and a soft comfortable finish.



## SUSTANS® DUPONT™ SORONA®

Sustans® Dupont™ and Sorona® is made out of renewable fibers. The Sustans® production process is using 30% less energy and consists of 37% renewable fibers compared to common insulation materials.



